



HOW TO APPLY BOND & SEAL

Total Solution for Air Source Heat
Pumps & External Oil Boilers

External Heating & Waste Water
Protection

YouTube

[Click here](#)



Website

[Click here](#)



TOTAL SOLUTIONS

ASHP are part of the Government's plan to reduce carbon emissions and tackle climate change, meaning it will be a big part of the heating industry, now and in the future.

It is so important that they are fitted to make sure every bit of energy is used efficiently. Until now, the products available have been very hard to install to a standard that not only retains the heat/efficiency, but also looks aesthetically pleasing to the customer / homeowner

Speaking to installers, they asked for products that could be ...

1

Already Weather/UV Proof

Does not have to be painted on-site, to save on labour costs or when time and weather may not be on their side

3

Easy to install

Simple to cut and seal angles / joints and all fittings like antifreeze valves

5

Maintainable

Easy to inspect and maintain on annual services

2

100% Waterproof

Making sure no moisture can get through the insulation is so important for the efficiency of the heat pump and system. All our products are 100% waterproof

4

Able to install through walls

Easy to insulate through the fabric of the building and seal with our insulation and bond & seal, so complying with new Part L Reg's

6

Quality looks

Looks quality once installed and simple to maintain with our Maintenance Coat

EXTERNAL HEATING INSULATION

Insulation Sizing

Primary Pro 22mm x 25mm Insulation (23 mm x 25mm \pm 1mm Tolerance)

Primary Pro 28mm x 19mm Insulation (29mm x 21mm \pm 1mm Tolerance)

Primary Pro 35mm x 19mm Insulation (36 x 21mm \pm 1mm Tolerance)

Primary Pro 42mm x 19mm Insulation (43 x 21mm \pm 1mm Tolerance)

Condensate Pro 35mm x 13mm Insulation (36 x 14mm \pm 1mm Tolerance)



The 42mm was produced to help insulate any 1 1/4" connections on the heat pump, available in 1M or 500mm lengths.

All are protected with our unique weather & UV protective coating allowing you to cut/mitre to the required size. It's also simple to cut and insulate all isolation valves or other external fittings.

To ensure the heating pipework is fully insulated, the insulation should go through the fabric of wall, then sealed with our Bond & Seal.



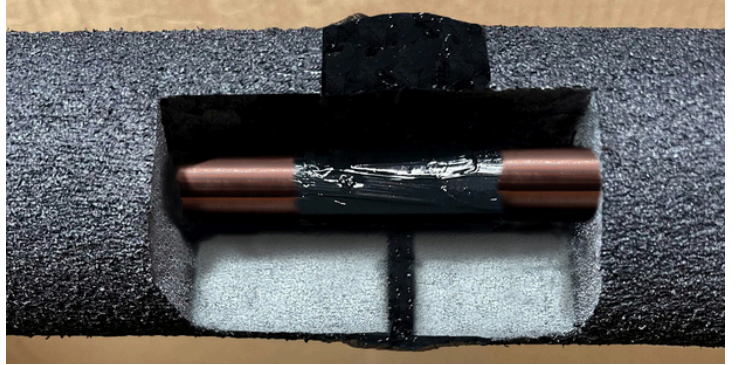
info@primarypro.co.uk
www.primarypro.co.uk



APPLY BOND AND SEAL

Bonding, Sealing & Capping Primary Pro Insulation

Like all materials, Primary Pro insulation naturally expands and contracts with changes in temperature. When making a joint, it is essential to Bond, Seal, and Cap using enough Bond & Seal to achieve a strong, durable connection.



Why Bond & Seal Matters

Our Bond & Seal has been specially formulated to work with Primary Pro insulation. It maintains joint integrity through varying weather conditions and prevents water ingress, ensuring the system's long-term performance.

How to Apply Correctly

- Apply plenty of Bond & Seal between the insulation and the pipework.
- Add more to the joint faces before bringing them together – when correctly applied, Bond & Seal will ooze out slightly.
- Smooth and cap the outer joint for a fully sealed finish.
- When joining different insulation sizes, follow the same process but use additional Bond & Seal to flaunch (blend) the wider section to the narrower.

How Much to Use

- We recommend a minimum of one tube per three lengths of 28mm x 19mm insulation (use more for larger sizes).
- This ratio is based on extensive product testing over three years prior to launch, ensuring optimum sealing and durability.

Temperature Considerations

Summer – High Temperatures

- **Storage:** Do not leave the Insulation or Bond & Seal in a hot van all day, as high temperatures can affect performance. Instead, store it in a cool place such as a garage or shaded area.
- **Before Use:** If the tube feels too warm, place it in a bucket of cool water for a short time to bring it back to the right temperature.
- **Application:** Insulation expands in the heat, so where possible, apply Bond & Seal and seal joints during cooler times of the day (early morning or later in the evening). This will help ensure a tighter, longer-lasting bond.

Winter – Low Temperatures

- Bond & Seal performs best in cooler or damp conditions, but if the temperature is below 10°C, warm the tube in water for 20 minutes before use to improve workability.

Annual Inspection & Maintenance

Recoat as and when needed – inspect during annual services, and if any discolouration is visible, apply a fresh coat using our Primary Pro Maintenance Coat (see notes).

Important - Do not skimp on Bond & Seal. Using too little can lead to joint separation and water ingress, compromising system performance.

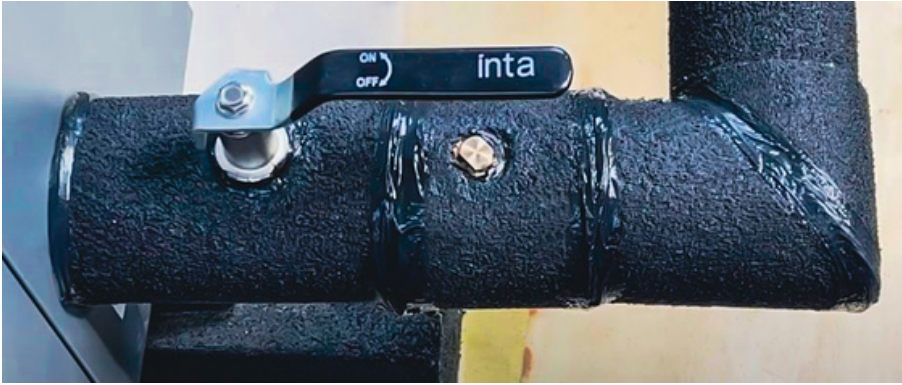
Notes: We have updated our recoating guidance to “as and when needed” based on results from ongoing life testing carried out over the past 8 years. We found that some installations, particularly those not south-facing, did not require recoating within the first 5 years. As a result, we now recommend checking the condition of the insulation during the annual service and applying a maintenance coat only if signs of wear or discolouration are visible.



info@primarypro.co.uk
www.primarypro.co.uk

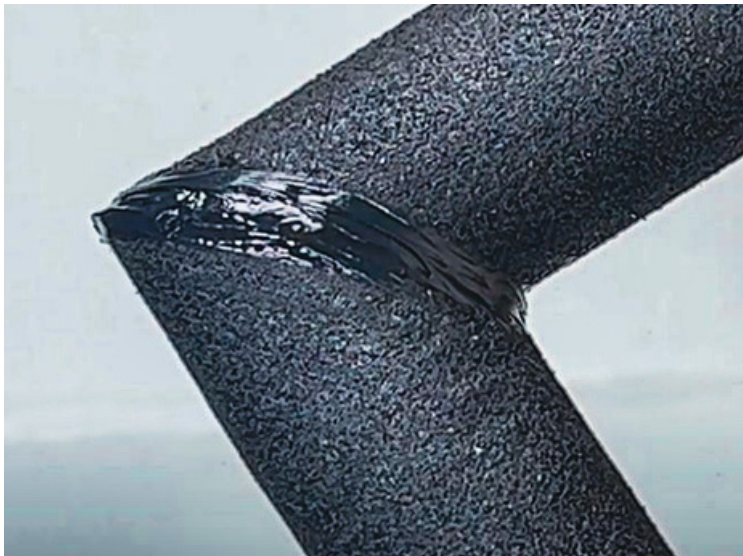
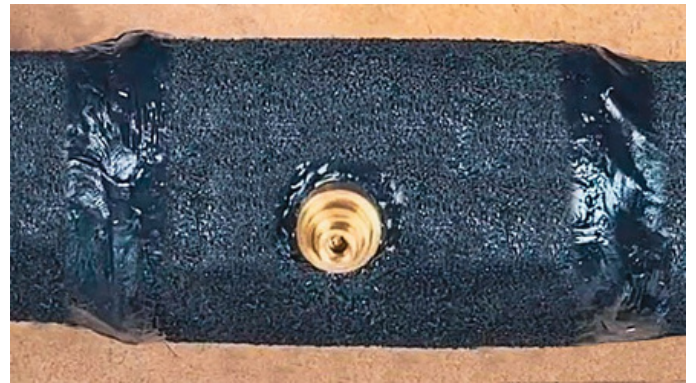


BOND AND SEAL JOINTS



Sealing of isolation valve, antifreeze valve, 90° elbow and bonding to heat pump.

Sealing of antifreeze valve, with flaunching to join different insulation sizes.



Sealing and capping to 90° elbow.

Joint & flaunch.



BOND & SEAL 290ML AS001



Our Bond & Seal 290ml aids installers to seal joints, it provides the perfect seal for the insulation through the wall to prevent energy loss, or weather (rain/snow) entering the inner fabric of the wall.

You can also use our Bond & Seal to seal our insulation or pre-insulated flexible pipes to the heat pump; with it being flexible when cured, it takes the impact of any vibration from the heat pump.

As the Bond & Seal is subjected to all weather conditions, even when cured it will expand and contract with varying temperatures.

MAINTENANCE COAT

Once Primary Pro insulation has been fitted and sealed correctly, it should be maintained throughout the lifetime of the heat pump installation and the good news is, maintenance is simple.

Depending on where the insulation is fitted, surrounding air quality and UV, this insulation may need re-coating. It is simple to maintain by re-coating with our Maintenance Coat. Our Maintenance Coat makes re-coating the insulation simple, you can also coat the Bond & Seal.

During the annual service of an air source heat pump system, the engineer will check that all insulation and seals continue to provide protection against moisture ingress and maintain UV resistance.

We recommend re-coating as and when needed - inspect during annual services, and if any discolouration is visible, apply a fresh coat using our Primary Pro Maintenance Coat (see notes*).

Professional installers take pride in leaving a job looking immaculate, many apply the maintenance coat after installation to tidy up any brick dust or surface marks and give a smooth, consistent finish.

Our Primary Pro/ Condensate Pro Maintenance Coat is available in 250ml and 1L tins. It's water-based, making brush cleaning quick and easy after use.

Maintenance Coat 250ml - IG005

Maintenance Coat 1Ltr - IG010



**Notes: We have updated our recoating guidance to "as and when needed" based on results from ongoing life testing carried out over the past 8 years. We found that some installations, particularly those not south-facing, did not require recoating within the first 5 years. As a result, we now recommend checking the condition of the insulation during the annual service and applying a maintenance coat only if signs of wear or discolouration are visible.*



info@primarypro.co.uk
www.primarypro.co.uk



PRIMARY PRO JOINT COVERS

Simplifying Sealing. Strengthening Every Installation.

At Primary Pro, we're always listening to the needs of our installers. One common request? A quicker, more robust way to seal joints, especially when time and weather conditions aren't on the installer's side. While Bond & Seal remains the core of our sealing system, our new Joint Covers provide an additional option for extra durability and easier application.

- **Time-Saving:** A quick, clean solution that reduces application time on-site, especially useful during maintenance visits.
- **Installer Driven Design:** Developed directly from installer feedback to solve common challenges with external insulation sealing.
- **Consistent Finish:** Provides a neat, professional appearance for every joint, giving confidence to both installers and homeowners.

Why Choose Joint Covers?

Joint covers don't replace Bond & Seal, they enhance it. They're an optional upgrade for installers who want the quickest, neatest, and most robust finish possible on every job.

How They Work with Bond & Seal

- Apply Bond & Seal directly to the Primary Pro insulation joint in the standard way, making sure the Bond & Seal is inside the insulation to form a joint to the pipework and create a solid, weatherproof seal.
- Prepare the Joint Covers - Each joint cover comes in two pieces. Apply 2-3mm of Bond & Seal to the inside surface of each piece, making sure the entire internal face and edges are fully covered.
- Fit the first half of the joint cover - Position the first half of the joint cover over one side of the sealed joint and press it firmly to bond it into place.
- Fit the second half on the joint cover - Place the second half over the opposite side, ensuring the two halves lock together correctly. Align the 2 guide lines on the covers for a perfect fit and to ensure all edges are sealed, preventing any water or moisture ingress.
- Secure the Cover - Once aligned, secure the joint cover with a tie wrap to hold it firmly in place while the Bond & Seal cures.

STRAIGHT JOINT COVERS

Perfect for all straight runs of pipework.

- Use on every joint for a consistent seal
- Great for quick repairs or additional reinforcement

Primary Pro 28mm Joint Cover - JC28

Primary Pro 35mm Joint Cover - JC35



ELBOW JOINT COVERS

Purpose-designed for pipe bends and elbow joints.

- Reinforces the areas most prone to stress
- Completes the system with a professional finish

Primary Pro 28mm Elbow Joint Cover - EJC28

Primary Pro 35mm Elbow Joint Cover - EJC35



info@primarypro.co.uk
www.primarypro.co.uk

