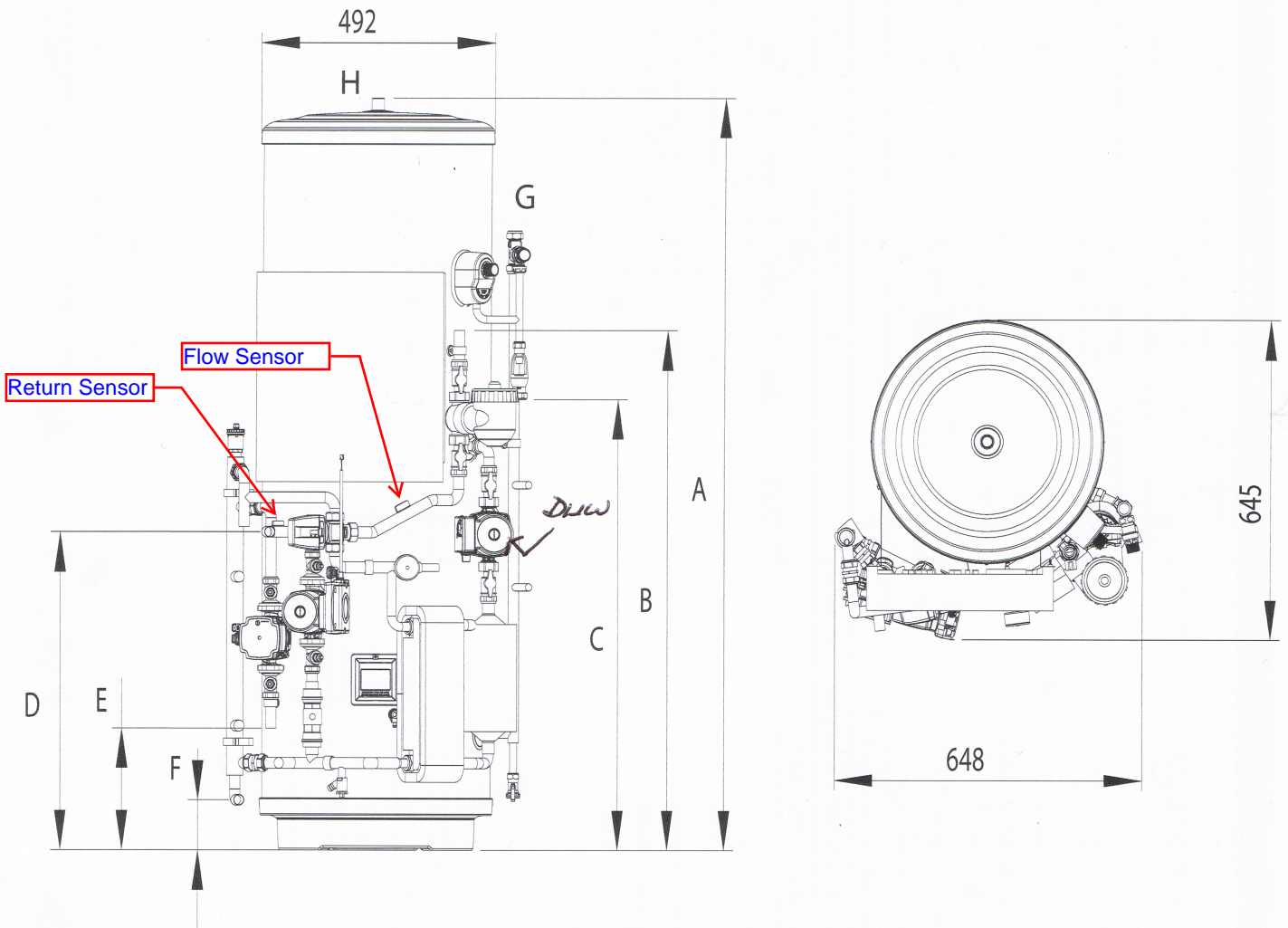


Fig 2c - Dimensions and EU Product Fiche- Slimline models



KEY

- A OVERALL HEIGHT
- B HEAT PUMP FLOW CONNECTION (22mm O/D COPPER)
- C TUNDISH OUTLET CONNECTION (22mm COMPRESSION)
- D HEAT PUMP RETURN CONNECTION (22mm O/D COPPER)
- E HEATING CIRCUIT FLOW CONNECTION (22mm O/D COPPER)
- F HEATING CIRCUIT RETURN CONNECTION (22mm O/D COPPER)
- G COLD WATER INLET CONNECTION (22mm COMPRESSION)
- H HOT WATER OUTLET CONNECTION (22mm COMPRESSION / 3/4" BSP M)

*170 L  
Slimline*

CAPACITY	150	170
A	1515	1689
B	1047	1047
C	909	1083
D	637	636
E	246	246
F	101	101

MODEL	150 Slimline	170 Slimline
Energy efficiency class	C	C
Standing loss in W	60	68
Storage volume V in Litres	150	170

Technical parameters in accordance with European Commission regulations 814/2013 and 812/2013