

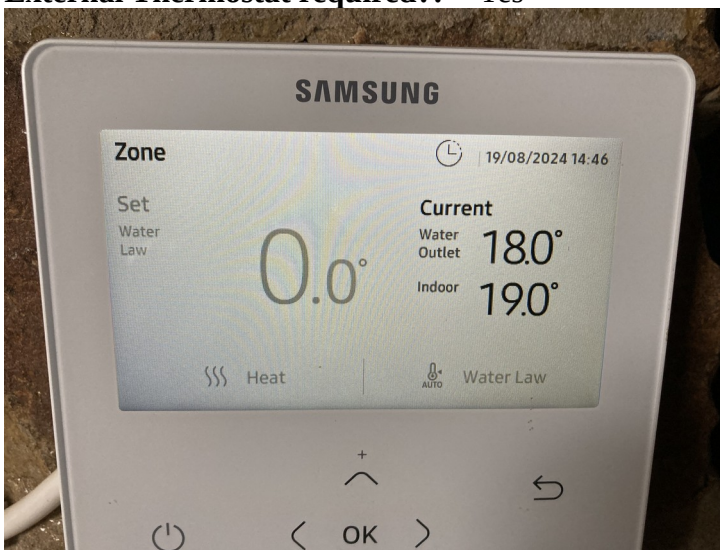
## Samsung Gen 6 Wired Remote Controller Display Types

To set up Water Law(Samsung speak for Weather Compensation), appropriate values need to be entered in FSV settings 2011, 2012, 2021, 2022, 2031 & 2032. Weather Compensation, once set up will run by default in two of the three central heating display options.

The Central Heating display chosen depends on the settings within the service mode settings. On each display, there are 3 values, of which only one can be altered. The other two figures display the current value of the Water Outlet temperature (Samsung speak for Leaving Water Temperature (LWT)) and the current value of the Indoor temperature.

### Offset Display Option

**Alterable setting:** Water Law (Weather compensation) Offset  
**Weather Compensation?:** Yes  
**Required Service Mode settings:** FSV 2091/2092 = 1,2,3 or 4  
**External Thermostat required?:** Yes



### Set Indoor Temperature Display Option

**Alterable setting:** Indoor Temperature Thermostat setting  
**Weather Compensation?:** Yes  
**Required Service Mode settings:** FSV 2091/2092 = 0 (Not use)  
Indoor Zone Option → Standard Temperature = Indoor  
**External Thermostat required?:** No



## Set Water Outlet Display Option

**Alterable setting:** Water Outlet setting

**Weather Compensation?:** No

**Required Service Mode settings:** FSV 2091/2092 = 0 (Not use)

Indoor Zone Option → Standard Temperature = Water Outlet

**External Thermostat required?:** No



## Comments

The Offset display option allows the user to offset the water outlet temperature (LWT) that is selected by weather compensation by plus or minus 5C. This is useful to fine tune your weather compensation settings or adjust for temporary factors such as solar gain or cold winds. This only works when an external thermostat is in use. Setbacks can be programmed using the settings in the external thermostat.

The Indoor Temperature display option uses the thermostat within the wired remote controller to turn the heat pump on or off. The water outlet temperature (LWT) is determined by weather compensation. Depending on the setting in FSV 2093, the heat pump may also be turned off if the LWT exceeds the target LWT. Setbacks can be programmed using the settings in the wired remote controller.

The Water Outlet display option is rarely used. Weather compensation is not active and the water outlet temperature (LWT) is controlled by the value the user sets in this display eg 30.0C.